



Asset Management Plan Update

Operators Workshop

July 27, 2021

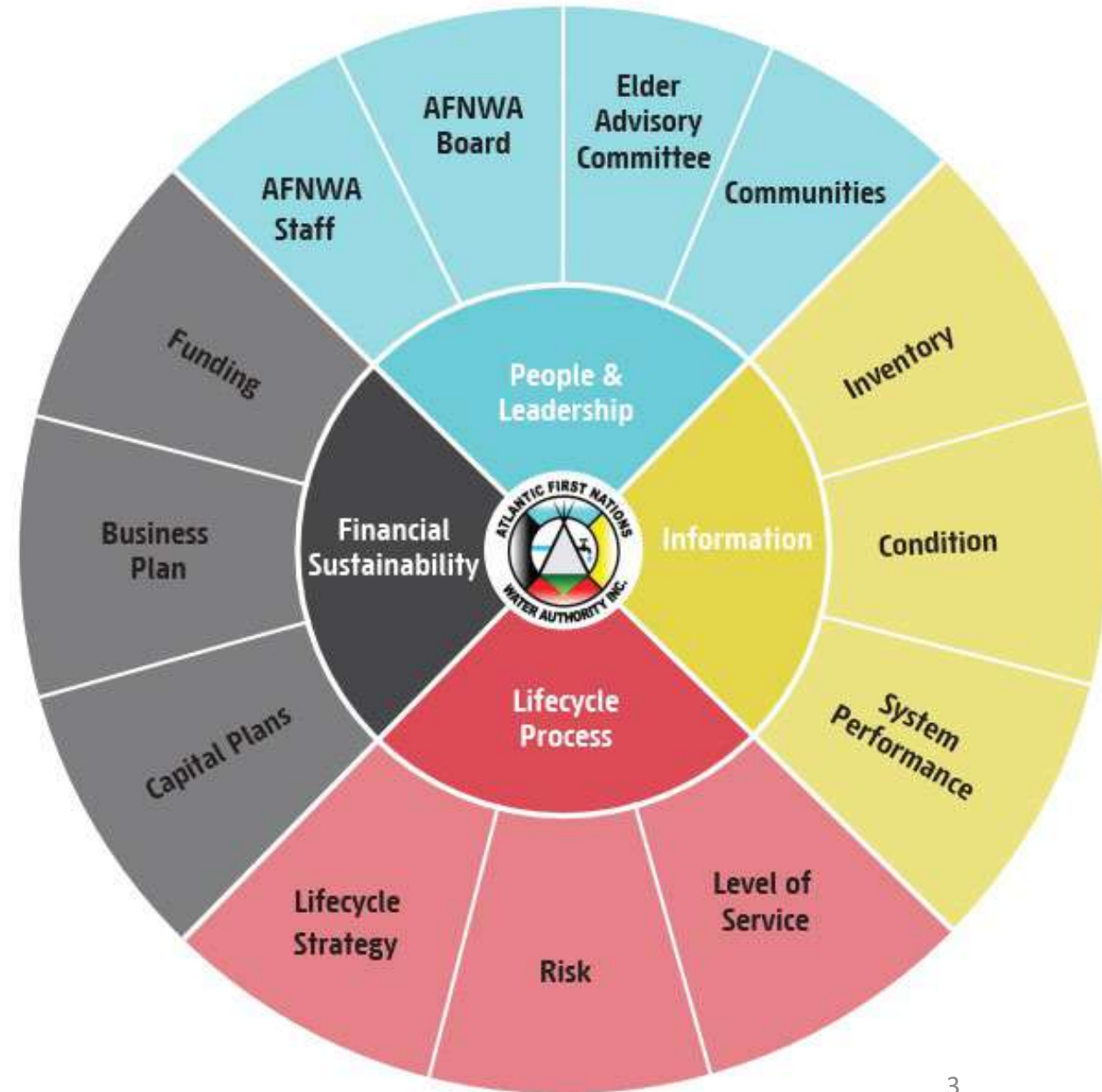
John Lam, Manager of Engineering

Asset Management Plan Update

- What is Asset Management?
 - What do you have, where is it?
 - What is the condition?
 - Level of service?
 - What needs to be done & when?
 - What will it cost & timeline?
 - Then what?

AMP Update

- Dillon Consulting selected
- Board approval on January 13
- Initial Scope for 15 communities
- Meetings and workshops
- Asset Management Framework
- Sampling programs
- Condition assessments



Asset Management Plan Update

- We need to know everything You (the operator) know and more
- Frequency of failure
- Maintenance logs
- Age of equipment
- Record information, well logs
- More info = better plan



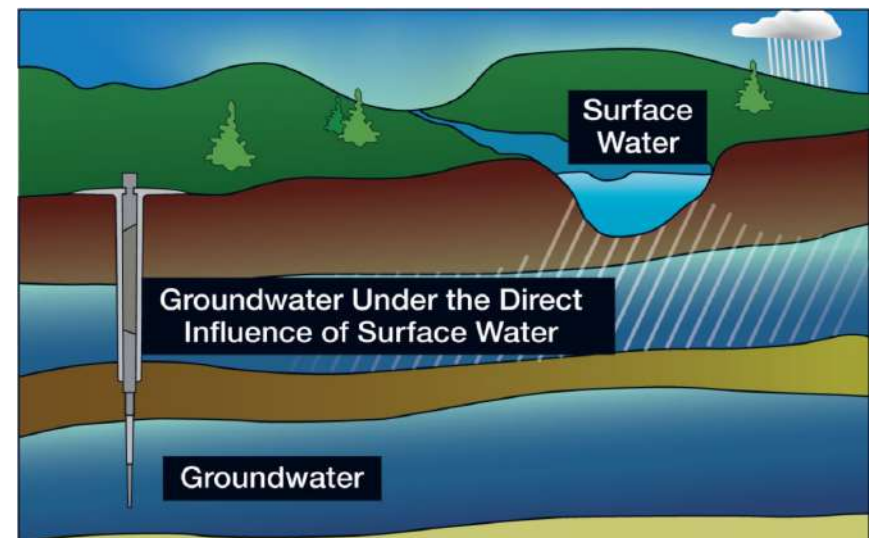
Asset Management Plan Update

- Record information, well logs
- Age of equipment = when to replace
- More info = better plan



Asset Management Plan Update

- Field work
 - Environmental risk assessments (ERAs)
 - Assimilative capacity of receiving water
 - Establish limits for effluent quality
 - Effluent Discharge Objectives [TSS, CBOD, Nutrient removal targets, etc.]
 - Groundwater assessments
 - Groundwater Under Direct Influent (GUDI)
 - Step 1: 18 assessments
 - Step 2: 14 assessments
 - Step 3: 5 assessments



Asset Management Plan Update

- Requesting information from ISC
- Condition assessment
 - Initial meeting with Dillon
 - Tour of facilities
 - Review of available background info

Asset Management Plan Update

- Operational survey
 - Exercise watermain valves
 - Identify seized or leaky valves
 - Inspect manholes, control chambers
 - Inspect hydrants
 - Capture co-ordinates and elevations for all surface appurtenances to build a geodatabase [GIS] for each community system
 - Contractor on standby in case we break something!

Asset Management Plan Update

Deliverables

- Review Industry Best Practice
- Asset Management Plan Framework
- Process to maintain AMP
- Detailed asset inventory and data gaps
- ERA Report for WWTPs
- Drinking water assessment (GUDI)
- Capital project prioritization process
- 10-year capital investment plan



Asset Management Plan Update

- Thank you!
- Questions or comments?