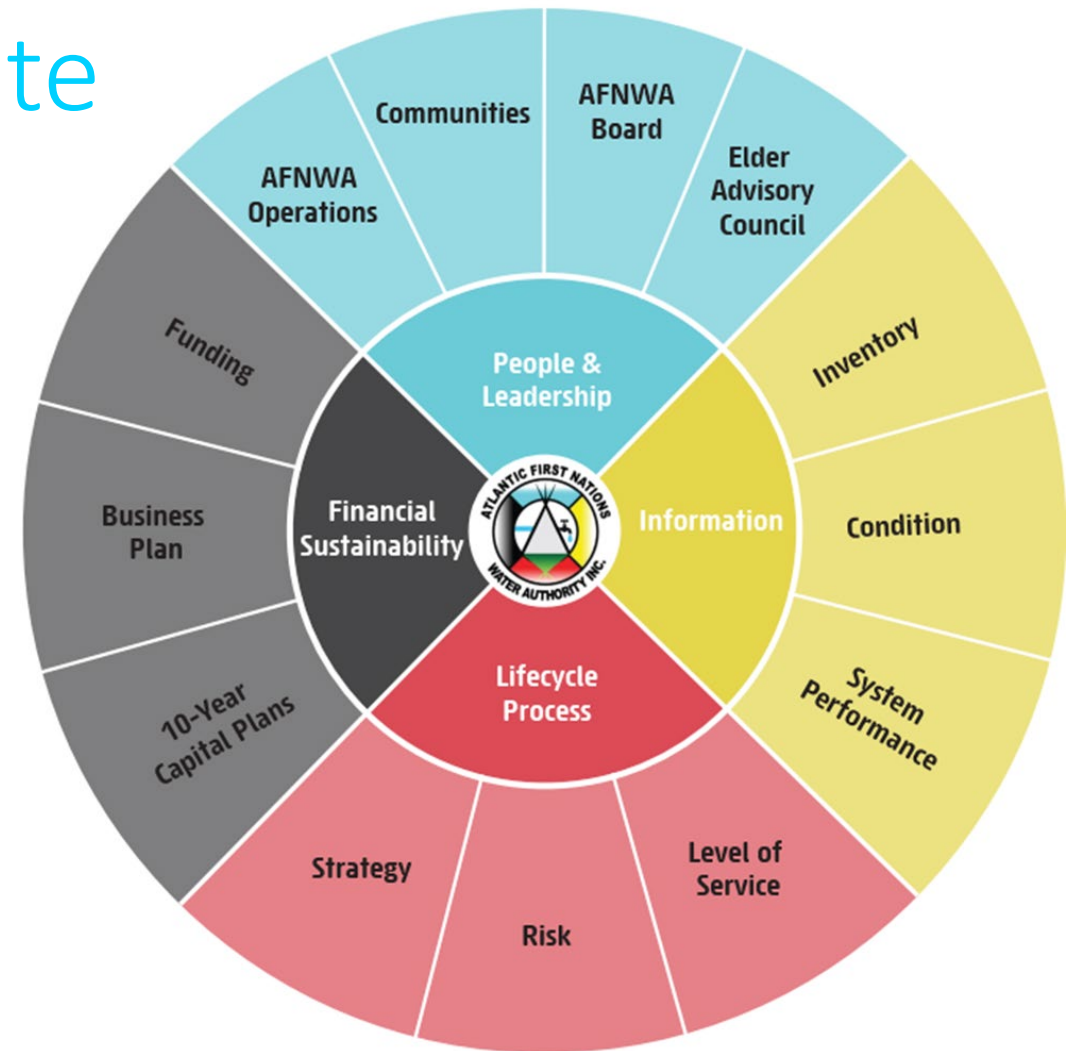


# Asset Management Update

- Dillon Consulting selected
- Recommendation and Board approval on January 13
- Held a number of meetings and one workshop
- Asset Management Framework



# Asset Management Update



- The Good
  - What do you have, where is it?
  - What is the condition?
  - Level of service?
  - What needs to be done & when?
  - What will it cost & timeline?
  - Then what?

# Asset Management Update



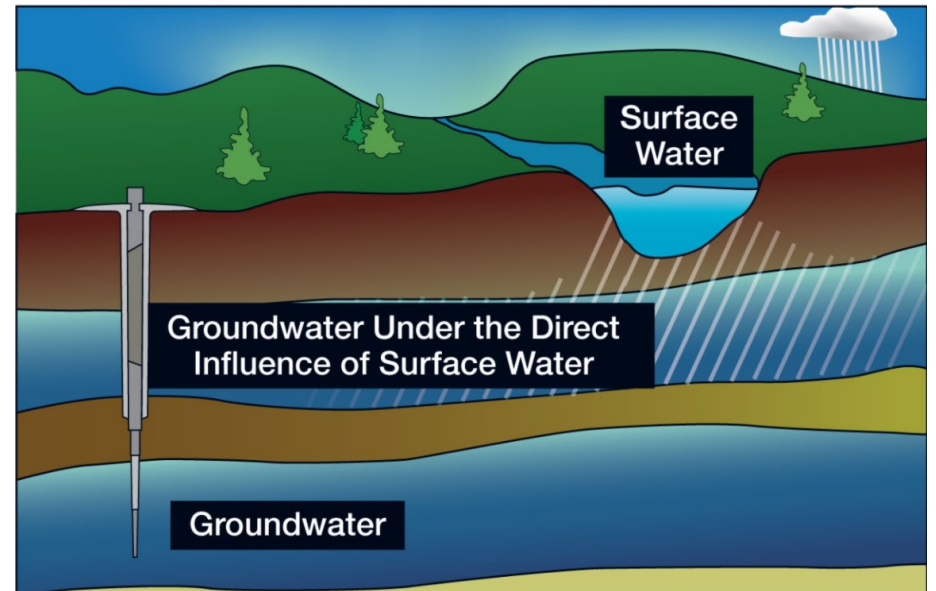
- The Bad
  - We need to know everything you know
  - How often things fail, maintenance logs (if available)
  - More info = better plan

# Asset Management Update

- Condition assessment
  - Initial meeting with Dillon
  - Tour of facilities
  - Review of available background info
- Operational survey
  - Exercising watermain valves
  - Removing covers from valve boxes, MHs, access hatches
  - Identifying seized or leaky valves

# Asset Management Update

- Field work
  - Environmental risk assessments (ERAs)
    - Model receiving water to establish assimilative capacity
    - Establish limits for cBod, TSS, TP, TN, E. Coli
  - Groundwater assessments
    - Groundwater Under Direct Influent (GUDI)
    - Step 1: 18 assessments
    - Step 2: 14 assessments
    - Step 3: 5 assessments



# Asset Management Update

## Deliverables

- Industry Best Practice
- Asset Management Plan Framework
- Process to maintain AMP
- Detailed asset inventory and data gaps
- ERA Report for WWTPs
- Drinking water assessment (GUDI)
- Capital project prioritization process
- 10-year capital investment plan



# Asset Management Update

- Next steps
  - Contact with each community
  - Collection of available data
  - Sampling for ERA



# Asset Management Update

- Questions or comments
  - Contact me anytime
  - Email: [John.Lam@afnwa.ca](mailto:John.Lam@afnwa.ca)
  - Cell: (902) 830-9646

